

14. Tool: Build your own DIY Atlas by creating JPEG image of RailMap Atlas

RailMap can be easily and quickly saved as a JPG image



The screenshot shows the RailMap interface with several annotations:

- A red box highlights the **Print JPG** button in the top toolbar.
- A red box highlights a red 'X' icon on the map.
- A red box highlights the **Save As** dialog box.
- A red box highlights the file name **=allMapFoude** and the file type **All Files (*.*)** in the **Save As** dialog box.

Text annotations on the screenshot include:

- Create a screenshot of RailMap as displayed within the Frame**
- IMPORTANT! Creating a JPG will NOT automatically open the JPG. instead you will need to find the location that you placed the Screenshot and open in a Picture Viewing app**
- IMPORTANT: Depending on where you are using the Browser this service may be disabled. Once the Button is pressed there should be a short delay and then the [Save As] Dialogue box will popup where you will be prompted to save the Picture to a location of your choice.**
- IMPORTANT: If the Box does not display then you MUST check your Security Settings. You must allow "Windows Pop-Up's". OR try a different Browser.**
- IMPORTANT! if you are renaming the picture then you must remember to add the .jpg extension to your file name, otherwise it will not save it properly**

Step 1

Position and Zoom RailMap to how you want the image to display within the Blue frame. Toggle **[Show]** or **[Fade]** for the network and scenic lines and physical features.

Step 2

Select the **[Print JPG]** icon and select the red **[Create a JPG screenshot of RailMap]** button and wait just a short while. Please be patient and wait for the device to make the JPG picture.

Step 3

Once the picture has been created the **[Save As]** pop up window will then appear and you are then invited to save the Image to a location of your choice.

Type in the Name you want to give your **MyMap.jpg** in the File Name Box and then hit the **[Save]** Button ..

NB: If you are renaming the picture remember to pop **[.jpg] after your new name.**

Step 4

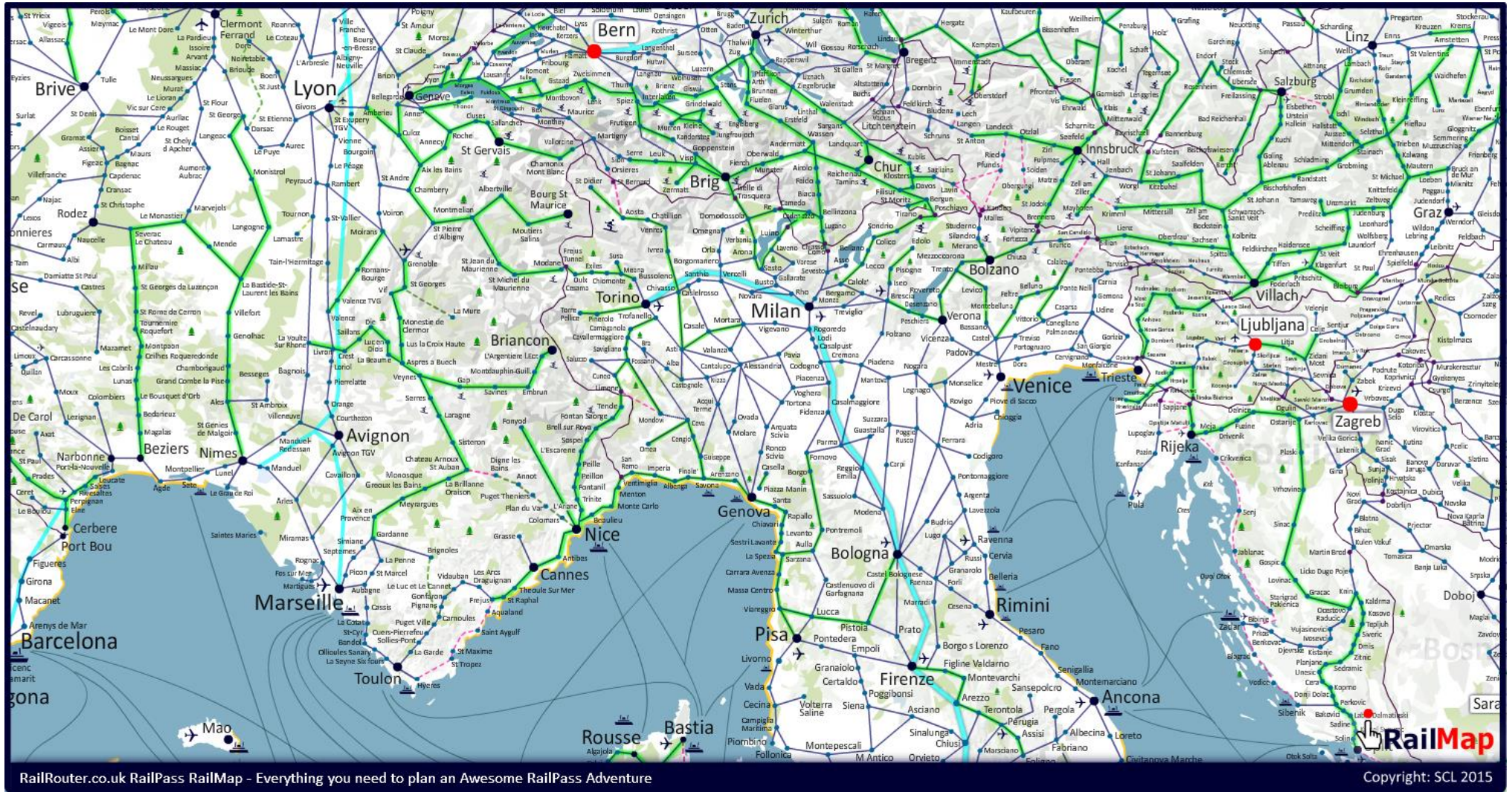
Using **[File Manager]** locate the saved picture and by double clicking on it a picture app will open up the .jpg.

Note:

If this function does not work and you do not see the dialogue box above then try a different browser .. depending on how your settings are configured and some browsers (e.g. internet café or similar) will not enable you to save stuff to their hard drives etc. Also note there is delay between hitting the button .. and the dialogue box asking you to save to location of your choice. This does work so be patient. If more than 30 seconds has past then it is a browser problem .. so try a different browser.

Create a JPEG image (Cont.)

The picture below is what you should expect as a result of the using the JPEG tool on a PC. If you don't see something similar please try again and follow the instructions carefully. It maybe because you renamed the JPEG and did not add the extension [MyMap.jpg]. If you keep name the same then you don't need to add .jpg. Alternatively if you are NOT prompted to save the JPG then the PC setting may be preventing you from doing this i.e. shared service in a library or similar.



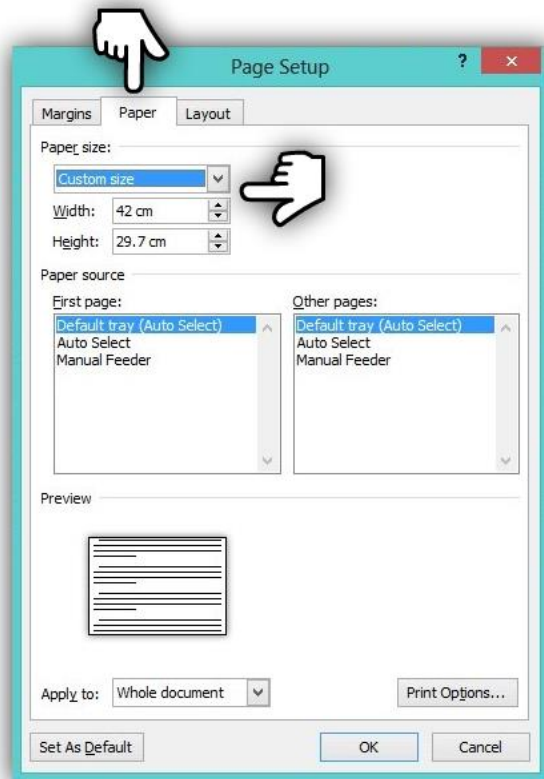
Importing JPEGs into either Word or PowerPoint to create your own Atlas

Step 1

Activate RailMap on a PC or laptop with the largest screen size possible. Create the JPEGs you want. Insert each JPEG on a new page or slide.

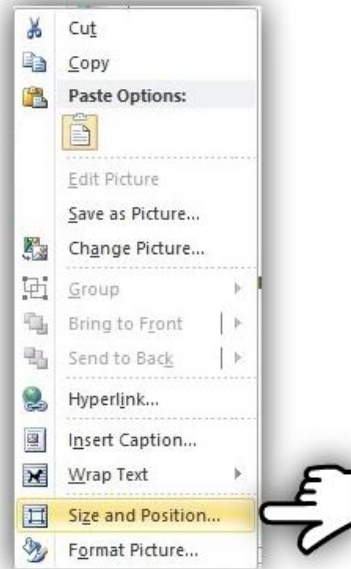
Step 2

Word document (OR PowerPoint) should be **Landscape A3** width of 42 and height of 29.7. Or something similar to the size of the JPEGs once you have inserted them. The instructions are very similar regardless of whether you use PP or Word.



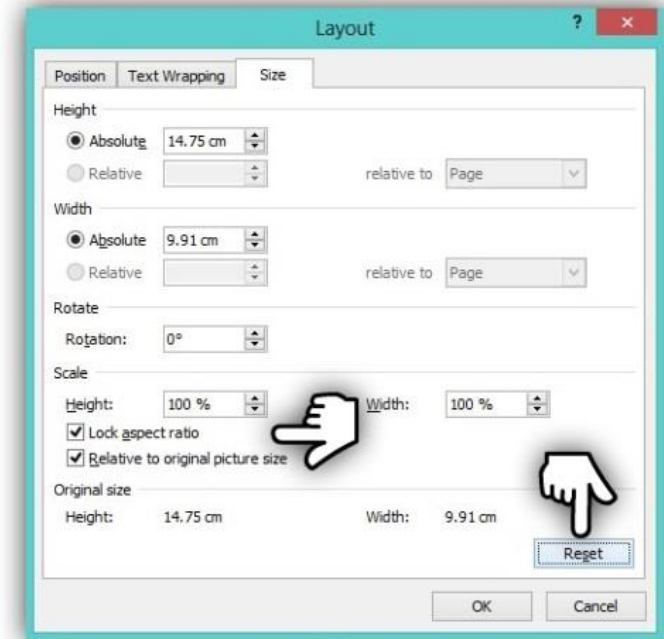
Step 3

Check that the inserted JPEG is at 100%. This means that when you insert your RailAtlas JPEG's they will not be distorted and kept at the same size when they were created. To check that they are 100% mouse [Right Click] the inserted JPEG and select [Size and Position] at the bottom of the context menu.



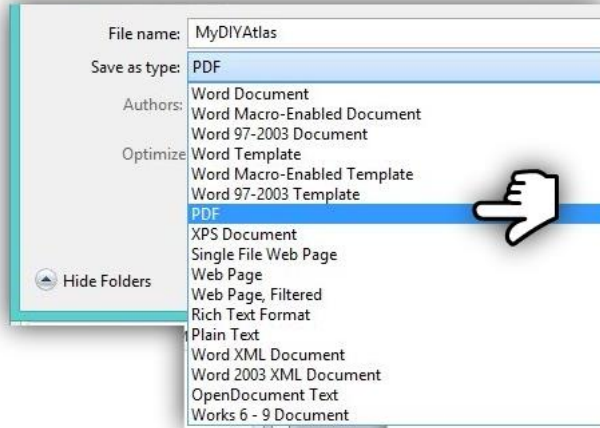
Step 4

Then select the [Reset] button at bottom of the window.



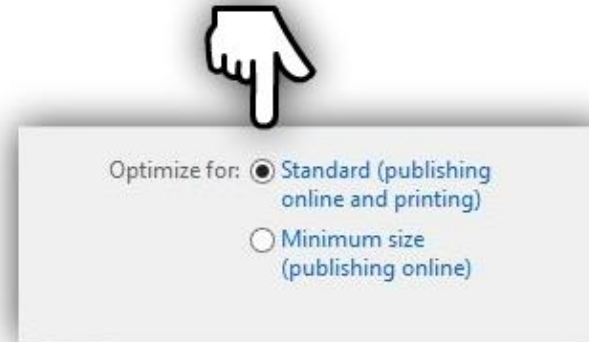
Step 6

The size of the Word or PP document does not matter as it will be printed to PDF, just as long as it big enough to display the JPEG pictures at 100%. To **[Save]** this document as a PDF select the **[Save as Type]** from the pull down menu.



Step 7

Toggle the option for **[Standard]** for the quality of the output PDF.



Alternatively you can Print to PDF via the **[Print]** menu. This is not as quick.

